

Evidence of Performance

Airborne sound insulation of building components

Test Report
No. 20-003512-PR01
(PB 01-H01-04-en-01)



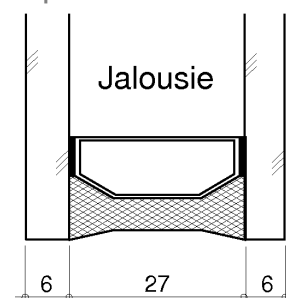
Client **Faltenbacher Jalousienbau
GmbH & Co. KG**
Im Gewerbepark 15
92681 Erbandorf
Germany

Product	Insulating glass unit with integrated venetian blinds
Designation	Isolette blind insulating glass
Overall dimensions (W x H)	1,230 mm x 1,480 mm
Configuration	6 float/27 cavity with integrated venetian blind/6 float
Gas filling	air
Weight per unit area	32.0 kg/m ²
Special features	-/-

Basis

EN ISO 10140-1: 2,016
EN ISO 10140-2: 2010
EN ISO 717-1: 2013

Representation



Instructions for use

This test report serves to demonstrate the airborne sound insulation of a building sound insulation component.

For Germany the following applies:
The weighted sound reduction index R_w can be used for the prognosis of the sound insulation of windows according to DIN 4109-35:2016.

Validity

The data and results given relate solely to the tested and described specimen.

Testing the sound insulation does not allow any statement to be made on any further characteristics of the present construction regarding performance and quality.

Weighted sound reduction index R_w
Spectrum adaptation terms C and C_{tr}



Curtain at top:
 $R_w (C; C_{tr}) = 36 (-1; -4) \text{ dB}$

Curtain at bottom:
 $R_w (C; C_{tr}) = 37 (-2; -5) \text{ dB}$

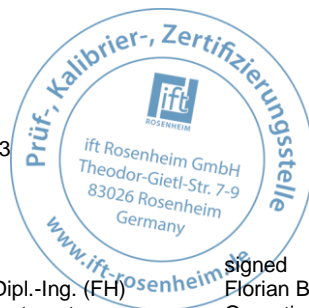
ift Rosenheim

10.09.2020

Translation dated 25.04.2023

signed

Markus Schramm, M.Eng., Dipl.-Ing. (FH)
Deputy Head of Testing Department
Building Acoustics



signed

Florian Brechleiter, MSc, Dipl.-Ing. (FH)
Operating Testing Officer
Building Acoustics

This document is valid without a signature. The original document n° 20-003512-PR01 (PB 01-H01-04-de-01) dated 10.09.2020 remains legally binding.

Notes on publication

The ift Guidance Sheet "Conditions and Guidance for the Use of ift Test Documents" applies.

The cover sheet can be used as abstract.

Contents

The test report contains a total of 10 pages.

- 1 Object
 - 2 Procedure
 - 3 Detailed results
 - 4 Instructions for use
- Data sheet (1 page)